

# Penn State **Extension**

## Backyard Rabbit Hutches

Agricultural and Biological Engineering

[abe.psu.edu](http://abe.psu.edu)

**No. IP 729-31**

This Idea Plan is intended to provide educational information and ideas concerning housing and equipment for small numbers of rabbits. The following attached drawings are based on historical plans and may not meet design and construction standards for your area:

Hutches for Rabbits (USDA 6137)

Rabbit House (USDA 6233)



If you decide to build a facility similar to any of these plans, be sure to check building requirements for your area. Your local building inspector, engineer, building supplier, or building contractor can help you determine what is a safe and legal facility for housing rabbits in your area. In addition to the rules and regulations covering design and construction of buildings, be sure to consider how you will handle the manure and potential nuisance problems for neighbors, including flies, odor, and noise.

The Department of Agricultural and Biological Engineering at Penn State has a variety of educational material available related to agricultural and biological engineering. This material is intended to help Pennsylvania farmers and others develop buildings and facilities for modern, environmentally-compatible farm facilities. The material can be used in conjunction with county extension staff, builders, suppliers, consulting engineers, the Natural Resources Conservation Service, financial management advisors, farm lenders, veterinarians, and others to assemble a facilities plan suitable for local conditions.

Publications are available in the areas of agricultural safety and health, animal housing systems, building and farmstead planning, crops and greenhouses, machinery systems and tractors, residential housing, soil and water resources, and solid waste management. Contact your county Penn State Extension Office for more information on these subjects. You can also obtain an index of publications concerning the above areas by calling, writing, faxing or e-mailing:

Department of Agricultural and Biological Engineering  
246 Agricultural Engineering Building  
University Park, PA, 16802-1909  
Telephone: 814-865-7685  
Fax: 814-863-1031  
Email: [agbioeng@psu.edu](mailto:agbioeng@psu.edu)

For more information, the following comprehensive handbook covering design and construction of small pole buildings is available:

NRAES-01—Post-Frame Building Handbook: Materials, Design Consideration, Construction Procedure (1997) 78 pages, \$14.00 (Contact the NRAES below for more information)

NRAES, Cooperative Extension  
PO Box 4557  
Ithaca, NY 14852-4557  
Telephone: (607)255-7654 Fax: (607)254-8770  
Email: [NRAES@cornell.edu](mailto:NRAES@cornell.edu)

---

Information may also be obtained by contacting the following:

The American Rabbit Breeders Assoc., Inc.  
P.O. Box 5667  
Bloomington, IL 61702  
[www.arba.net](http://www.arba.net)

An **OUTREACH** program of the  
College of Agricultural Sciences

Penn State College of Agricultural Sciences research and cooperative extension programs are funded in part by Pennsylvania counties, the Commonwealth of Pennsylvania, and the U.S. Department of Agriculture.

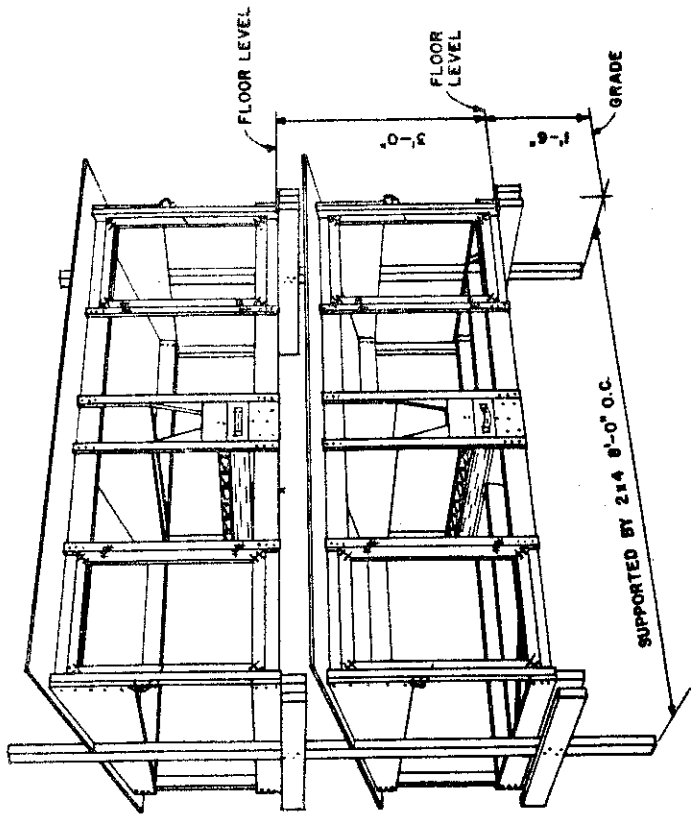
Visit Penn State Extension on the web: [extension.psu.edu](http://extension.psu.edu)

Where trade names appear, no discrimination is intended, and no endorsement by Penn State Cooperative Extension is implied.

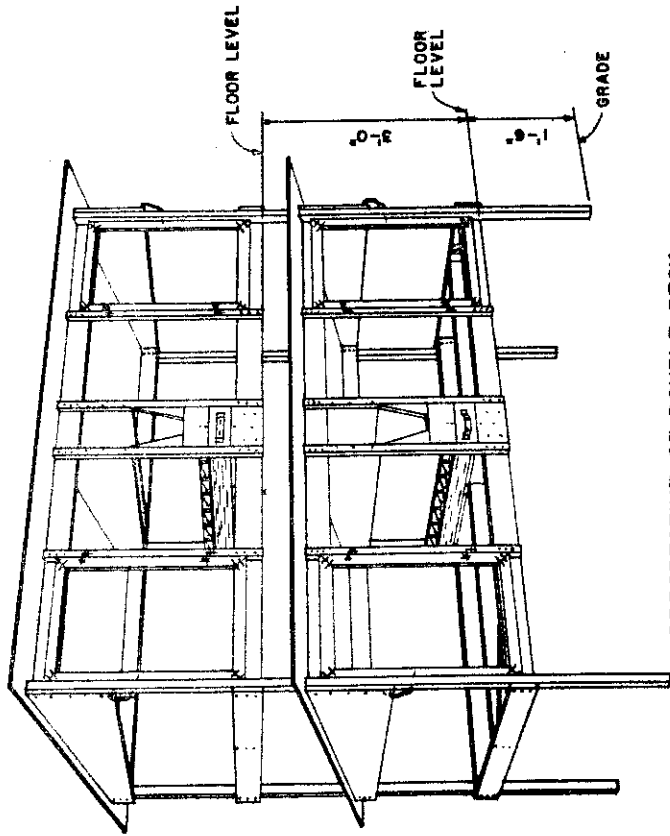
Penn State encourages persons with disabilities to participate in its programs and activities. If you anticipate needing any type of accommodation or have questions about the physical access provided, please contact [Name and phone number] in advance of your participation or visit.

This publication is available in alternative media on request.

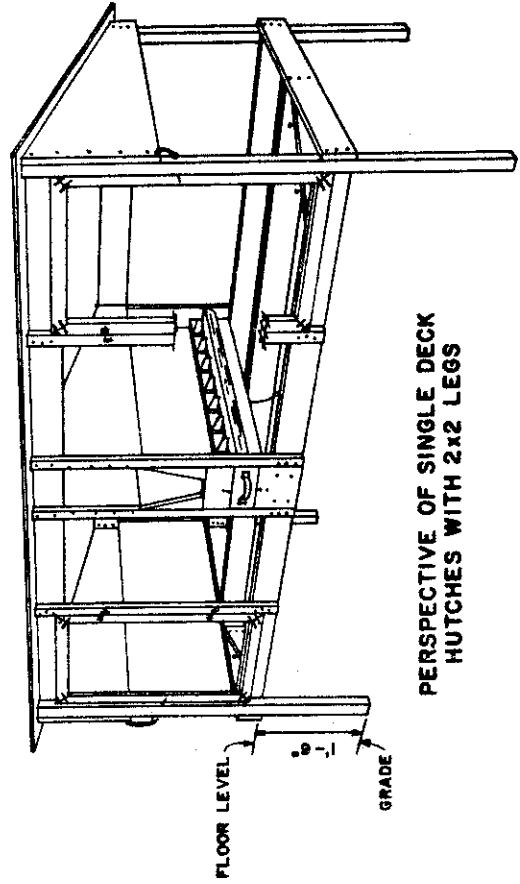
The Pennsylvania State University is committed to the policy that all persons shall have equal access to programs, facilities, admission, and employment without regard to personal characteristics not related to ability, performance, or qualifications as determined by University policy or by state or federal authorities. It is the policy of the University to maintain an academic and work environment free of discrimination, including harassment. The Pennsylvania State University prohibits discrimination and harassment against any person because of age, ancestry, color, disability or handicap, national origin, race, religious creed, sex, sexual orientation, gender identity, or veteran status. Discrimination or harassment against faculty, staff, or students will not be tolerated at The Pennsylvania State University. Direct all inquiries regarding the nondiscrimination policy to the Affirmative Action Director, The Pennsylvania State University, 328 Boucke Building, University Park, PA 16802-5901; Tel 814-865-4700/V, 814-863-1150/TTY.



PERSPECTIVE OF DOUBLE DECK HUTCHES HUNG ON 2x4 POSTS 8'-0" O.C.



PERSPECTIVE OF DOUBLE DECK HUTCHES WITH 2x2 LEGS

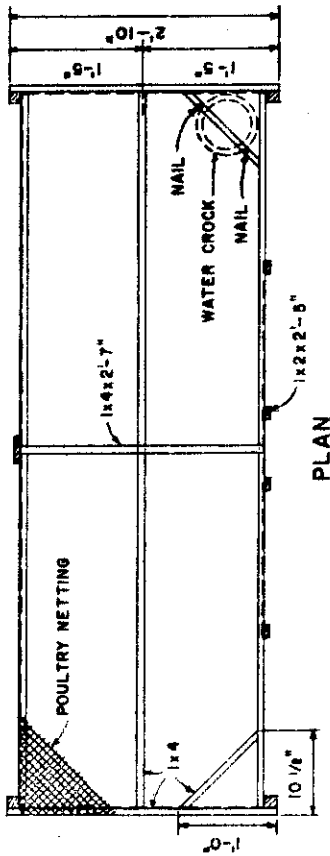


PERSPECTIVE OF SINGLE DECK HUTCHES WITH 2x2 LEGS

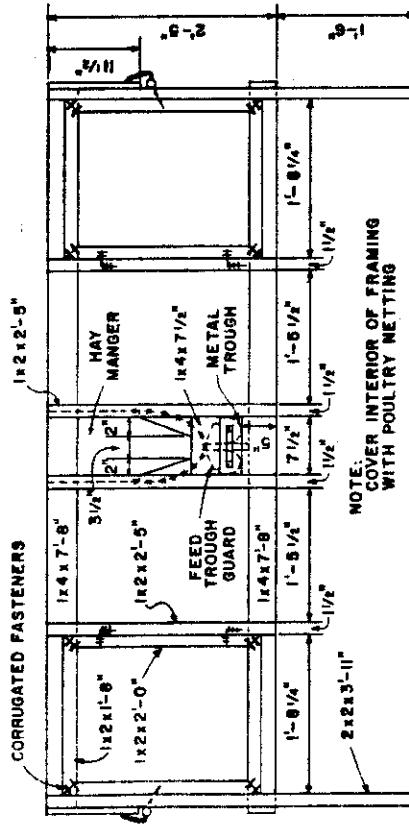
NOTE:  
POULTRY NETTING NOT SHOWN  
ON THESE PERSPECTIVES.

COOPERATIVE EXTENSION WORK IN AGRICULTURE AND HOME ECONOMICS	
THE PENNSYLVANIA STATE UNIVERSITY	
AND UNITED STATES DEPARTMENT OF AGRICULTURE COOPERATING	
<b>HUTCHES FOR RABBITS</b>	
N.M. & CAL. '72	6137
BHEET 1 OF 4	
ORDER NO. 729-6137	

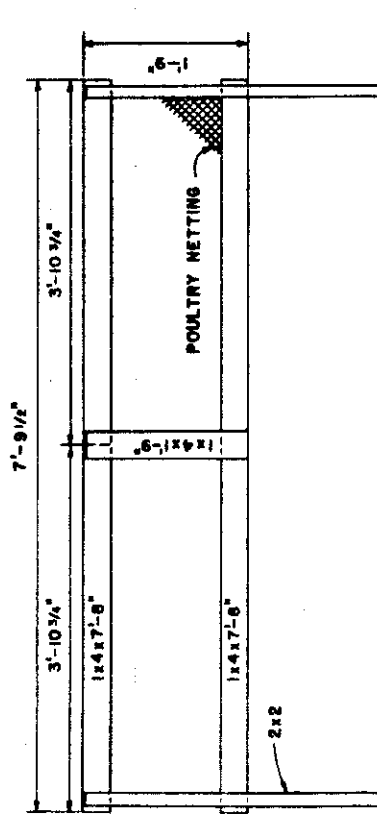
BASED ON NEW MEXICO PLAN



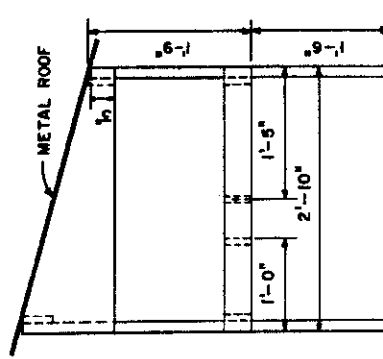
PLAN



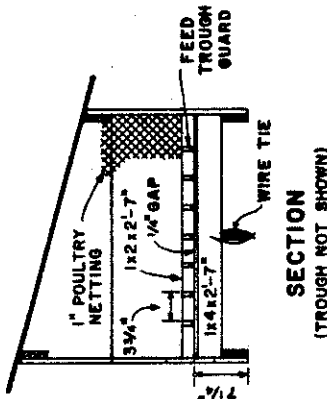
FRONT ELEVATION



REAR ELEVATION



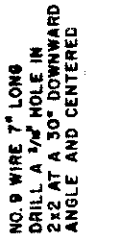
END ELEVATION



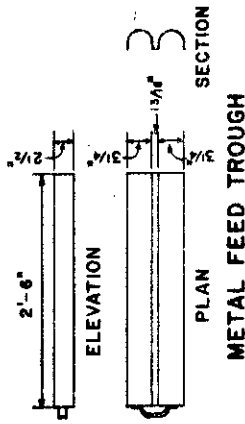
SECTION  
(TROUGH NOT SHOWN)



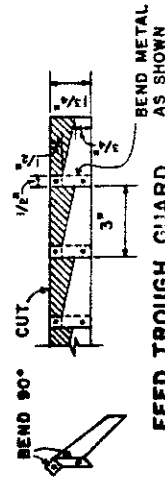
DOOR HINGE



DOOR LATCH



METAL FEED TROUGH



FEED TROUGH GUARD

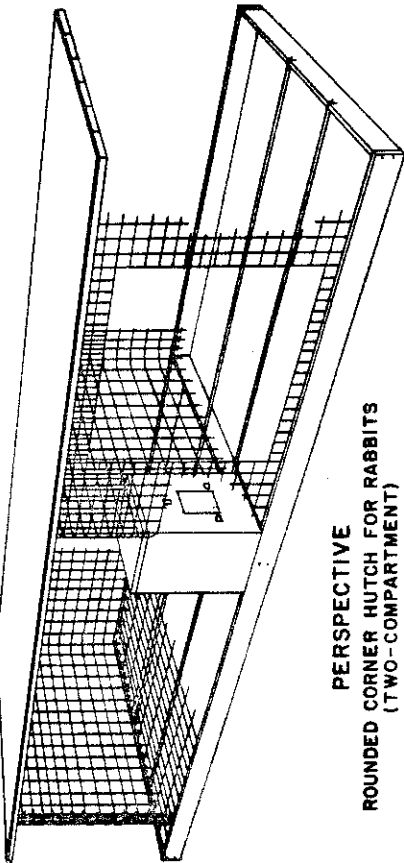
COOPERATIVE EXTENSION WORK IN  
AGRICULTURE AND HOME ECONOMICS  
THE PENNSYLVANIA STATE UNIVERSITY  
UNITED STATES DEPARTMENT OF AGRICULTURE COOPERATING

**HUTCHES FOR RABBITS**

M. S. CAL. '72 6137 SHEET 2 OF 4  
ORDER NO. 729-6137

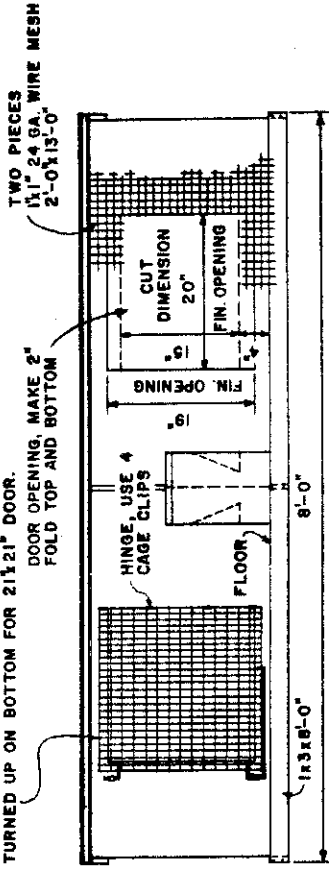
**NOTES:**

- A. ASSEMBLE WOOD FRAME AND COUNTERSINK METAL FLOOR SUPPORTS.
- B. STAPLE THE 16-GAUGE, 30-INCH BY 8-FOOT GALVANIZED WIRE MESH TO THE FRAME, USING 1-BY 1/2-INCH MESH FOR SMALL AND MEDIUM BREEDS OF RABBIT, AND 1-BY 3/4-INCH FOR THE LARGER BREEDS.
- C. THE CURVED WALLS ARE FORMED FROM 1/2-BY 1/2-INCH GALVANIZED WIRE MESH. CUT THE TWO BOTTOM STRANDS OF WIRE, LEAVING 1-INCH VERTICAL PROJECTIONS. THE 1-INCH PROJECTIONS ARE PLACED INSIDE THE WOOD FLOOR FRAME, FORMING TWO COMPARTMENTS, AND STAPLED.
- D. CUT THE DOOR OPENINGS BEGINNING 4-INCHES FROM THE FLOOR. THE OPENING IS REINFORCED BY TURNING 2-INCHES UP ON THE INSIDE ACROSS THE TOP AND 2-INCHES DOWN ON THE INSIDE ACROSS THE BOTTOM.
- E. CUT EVERY THIRD STRAND ON THE TOP TWO HORIZONTAL STRANDS OF THE SIDE AND REAR WALLS. THE 2-INCH TABS FORMED ARE BENT IN AT RIGHT ANGLES ACROSS THE BACK AND IN GRADUATED DEGREES ON SIDES TO GIVE A 2-INCH PITCH TO THE ROOF. TURN THE GAGE SECTION UPSIDE DOWN ON THE ROOF SHEATHING, THAT HAS BEEN ASSEMBLED WITH CORRUGATED FASTENERS, AND STAPLE COVER ROOF WITH A 3-FOOT WIDE PIECE OF 90-POUND ROOFING FELT AND NAIL.
- F. THE DOORS ARE OF 1-BY 1-INCH WIRE MESH CUT 21-BY 24-INCHES. TO GIVE RIGIDITY TURN DOWN 1-INCH ON INSIDE ACROSS THE TOP, AND TURN UP 2-INCHES ON INSIDE ACROSS THE BOTTOM. MAKE THE DOOR FASTENERS AS SHOWN. USE ALUMINUM GAGE CLIPS FOR ALL FASTENERS AND HINGES. HINGE DOOR ON FEEDER SIDE WITH 4-GAGE CLIPS. INSTALL DOOR FASTENER WITH SMALL WIRE TIES AT THE 1 1/4--AND 1 1/2--INCH SHANKS, SO FASTENER OVERLAPS THE EDGE OF THE CLOSED DOOR TO MAKE IT SECURE.

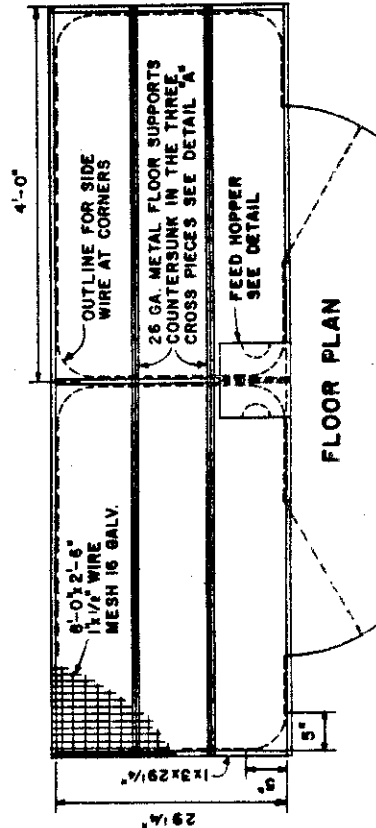


**PERSPECTIVE  
ROUNDED CORNER HUTCH FOR RABBITS  
(TWO-COMPARTMENT)**

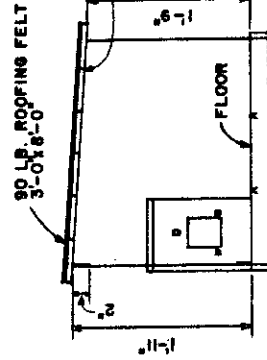
DOOR FROM 24 GA. 1 1/2" MESH CUT 21 1/2" x 24" WITH 1" TURNED DOWN ON TOP AND 2" TURNED UP ON BOTTOM FOR 21 1/2" DOOR.



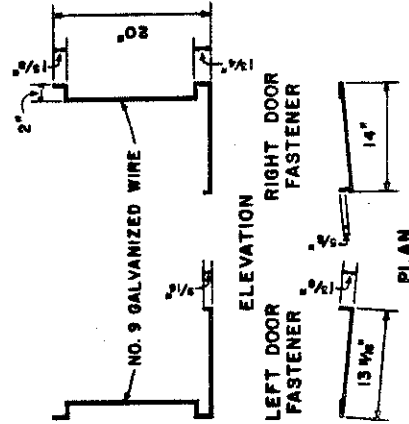
**FRONT ELEVATION**



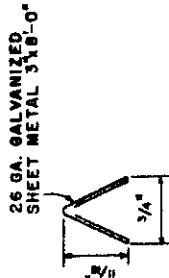
**FLOOR PLAN**



**SECTION**



**DOOR FASTENERS**



**NOTE:**  
TWO METAL FLOOR SUPPORTS ARE REQUIRED

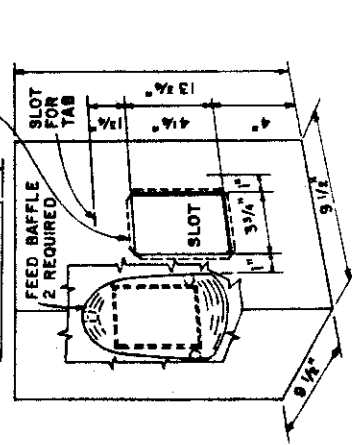
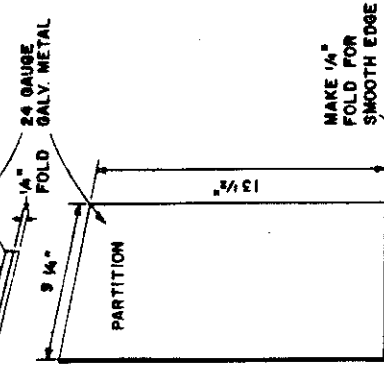
**DETAIL "A"  
METAL FLOOR SUPPORT**

COOPERATIVE EXTENSION WORK IN  
AGRICULTURE AND HOME ECONOMICS  
THE PENNSYLVANIA STATE UNIVERSITY  
UNITED STATES DEPARTMENT OF AGRICULTURE COOPERATING

**HUTCHES FOR RABBITS**

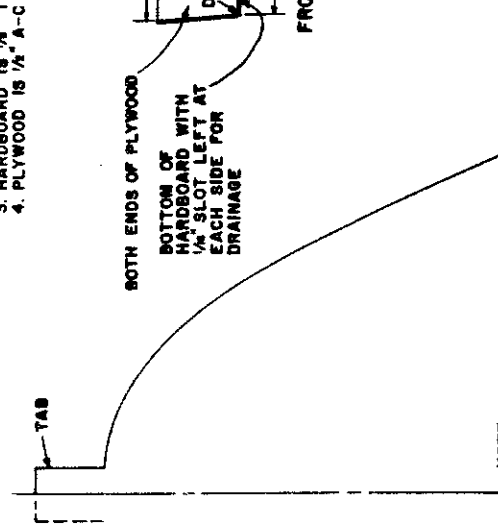
N.M. 8 CAL '72 **6137** SHEET 3 OF 4  
ORDER NO. 729-6137

- NOTE:
1. COVER ALL EXPOSED "CHEWABLE EDGES" WITH METAL.
  2. ALL PLYWOOD TO PLYWOOD JOINTS SHOULD BE MAILED AND GLUED.
  3. HARDBOARD IS 1/4" TEMPERED.
  4. PLYWOOD IS 1/2" A-C EXT. DFPA



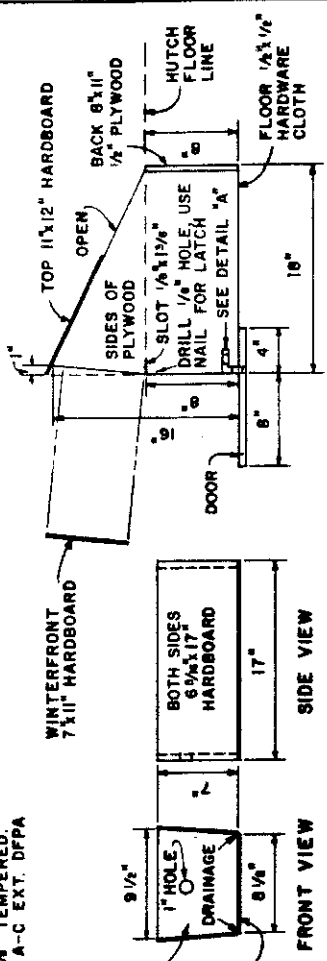
FEED HOPPER

- NOTES:
- A. THE FEED HOPPER, MADE FROM A 5-GALLON CAN, SUPPLIES FEED TO BOTH UNITS OF A DOUBLE HUTCH, BEGINNING 4 1/4-INCHES FROM THE BOTTOM OF THE CAN, CUT AN OPENING 3 3/4-INCHES HIGH AND 3 1/4-INCHES WIDE. TURN INSIDE 1/4-INCH TO MAKE SMOOTH EDGE.
  - B. THE BAFFLE, LID, AND DIVIDER ARE MADE FROM 24-GAUGE GALVANIZED METAL. TO OBTAIN OTHER 1/2-PATTERN, INSERT TABS THROUGH SLOTS SHOWN AND BEND.
  - C. CUT THE BAFFLE USING FULL SIZE 1/2-PATTERN. INSERT TABS THROUGH SLOTS SHOWN AND BEND. ON ALL SIDES, THAN TOP OF CAN.
  - D. FOR THE LID: CUT METAL 1-INCH LARGER, ON ALL SIDES, THAN TOP OF CAN. ON THREE SIDES 1/4-INCH IS FOLDED BACK TO MAKE A SMOOTH EDGE, AND THE 1-INCH IS BENT DOWN AT RIGHT ANGLES TO HOLD THE LID IN PLACE. THE 1-INCH IS FOLDED FLAT ON THE FOURTH SIDE FOR RIGIDITY. THIS ALLOWS THE CARETAKER TO SLIDE THE LID OFF THE CAN WHEN REPLENISHING THE SUPPLY OF PELLETS.

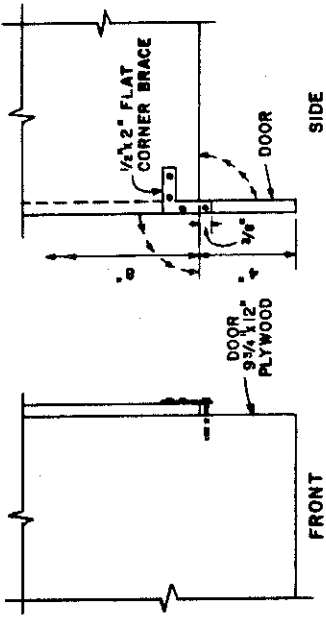


NOTE:  
FOLD AT CENTER LINE TO OBTAIN LEFT SIDE. USE 24-GAUGE GALVANIZED METAL.

FEED BAFFLE PATTERN

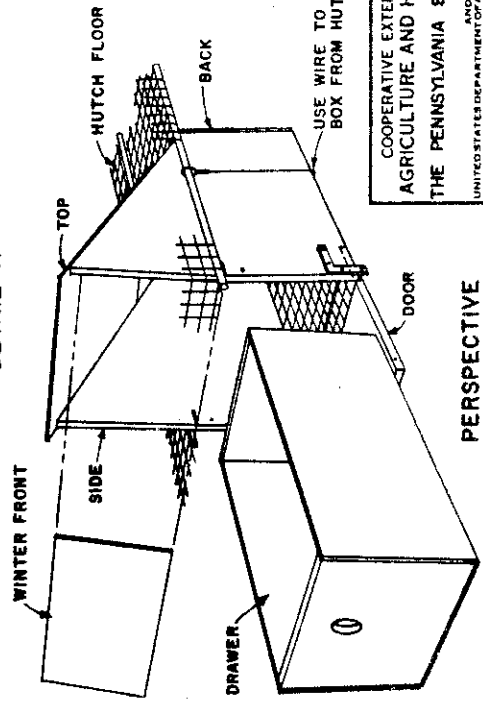


RABBIT NEST BOX DRAWER



RABBIT NEST BOX - SIDE VIEW

DETAIL "A"

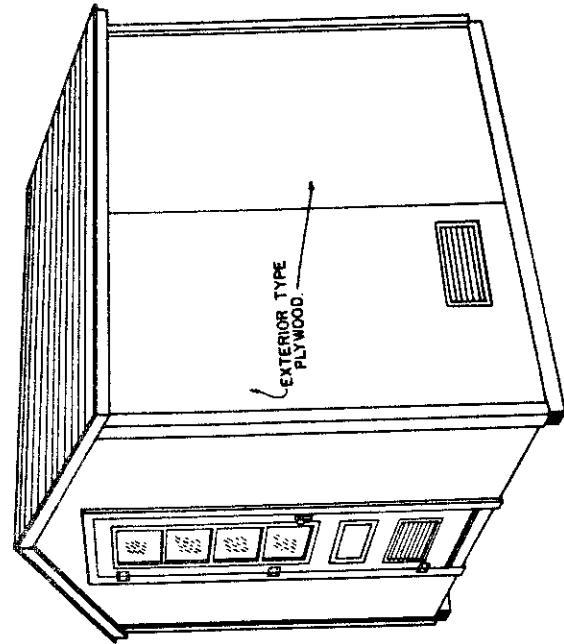


PERSPECTIVE RABBIT NEST BOX

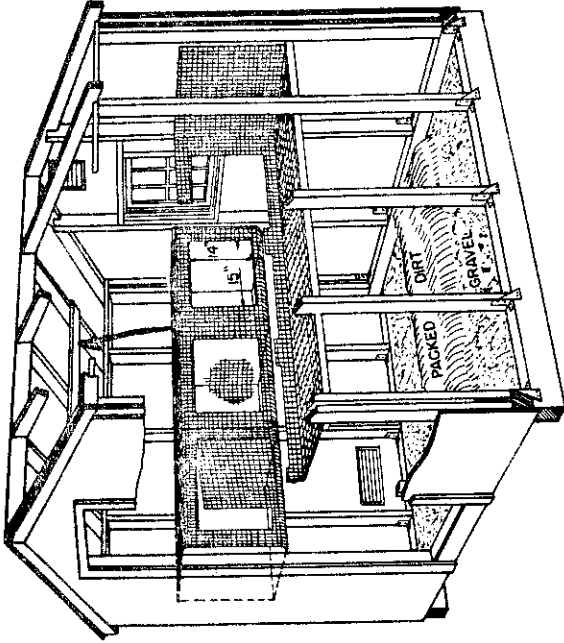
COOPERATIVE EXTENSION WORK IN AGRICULTURE AND HOME ECONOMICS THE PENNSYLVANIA STATE UNIVERSITY UNITED STATES DEPARTMENT OF AGRICULTURE COOPERATING

HUTCHES FOR RABBITS	
N. M. S. CAL. '72	6137
SHEET 4 OF 4	
ORDER NO. 729-6137	

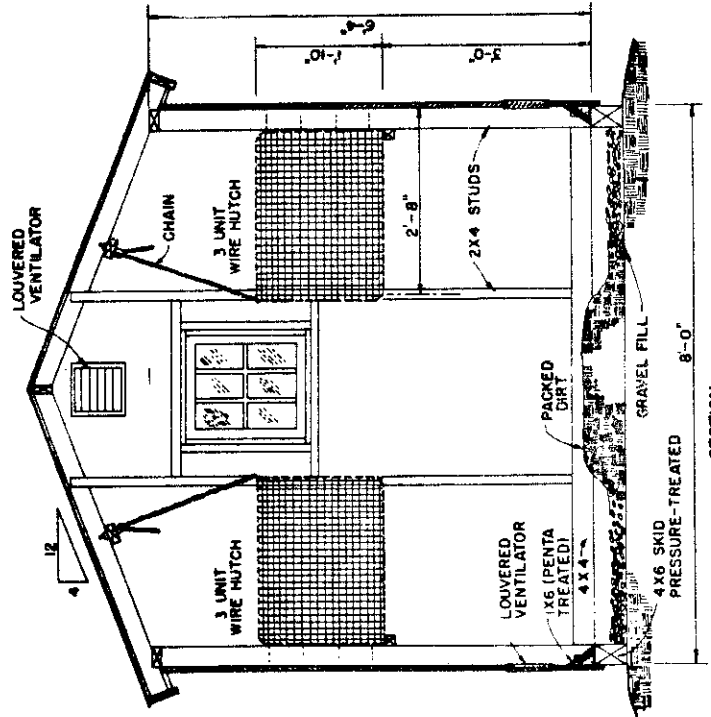
BASED ON CALIF. PLAN NO. OSA #210



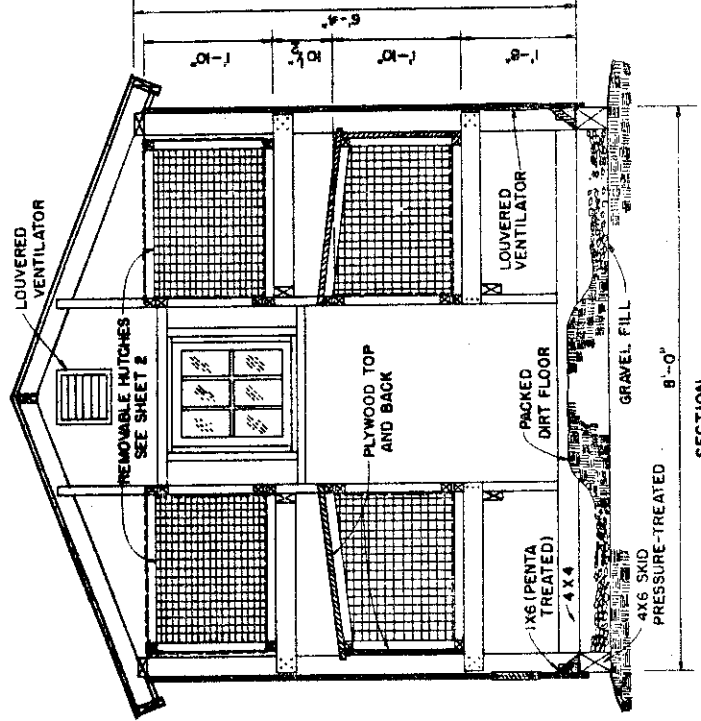
PERSPECTIVE OF RABBIT HOUSE



CUTAWAY VIEW OF 6'X6' RABBIT HOUSE  
SINGLE DECK WIRE FLOOR HUTCH.



SECTION  
SINGLE DECK WIRE FLOOR HUTCH



SECTION  
DOUBLE DECK WIRE FLOOR HUTCH

NOTE:  
BASED ON LINKS OF WISCONSIN  
BASED ON STATE OF WISCONSIN  
COUNTY LOCAL HEALTH AND  
BUILDING CODE AUTHORITIES  
BEFORE STARTING CONSTRUCTION



COOPERATIVE EXTENSION WORK IN AGRICULTURE AND HOME ECONOMICS	
THE PENNSYLVANIA STATE UNIVERSITY	
AND UNITED STATES DEPARTMENT OF AGRICULTURE COOPERATING	
RABBIT HOUSE	
WISC. '75	6233
SHEET 1 OF 2	ORDER NO. 729-6233

WIRE MESH MATERIAL  
 HUTCH TOP - 1" X 2" X 1/8 GAGE  
 HUTCH SIDE - 1" X 1" X 1/4 GAGE  
 HUTCH FLOOR - 1/2" X 1/2" X 1/4 GAGE (SMALL BREEDS)  
 5/8" X 3/8" OR 1/2" X 1" X 1/4 GAGE (LARGER BREEDS)

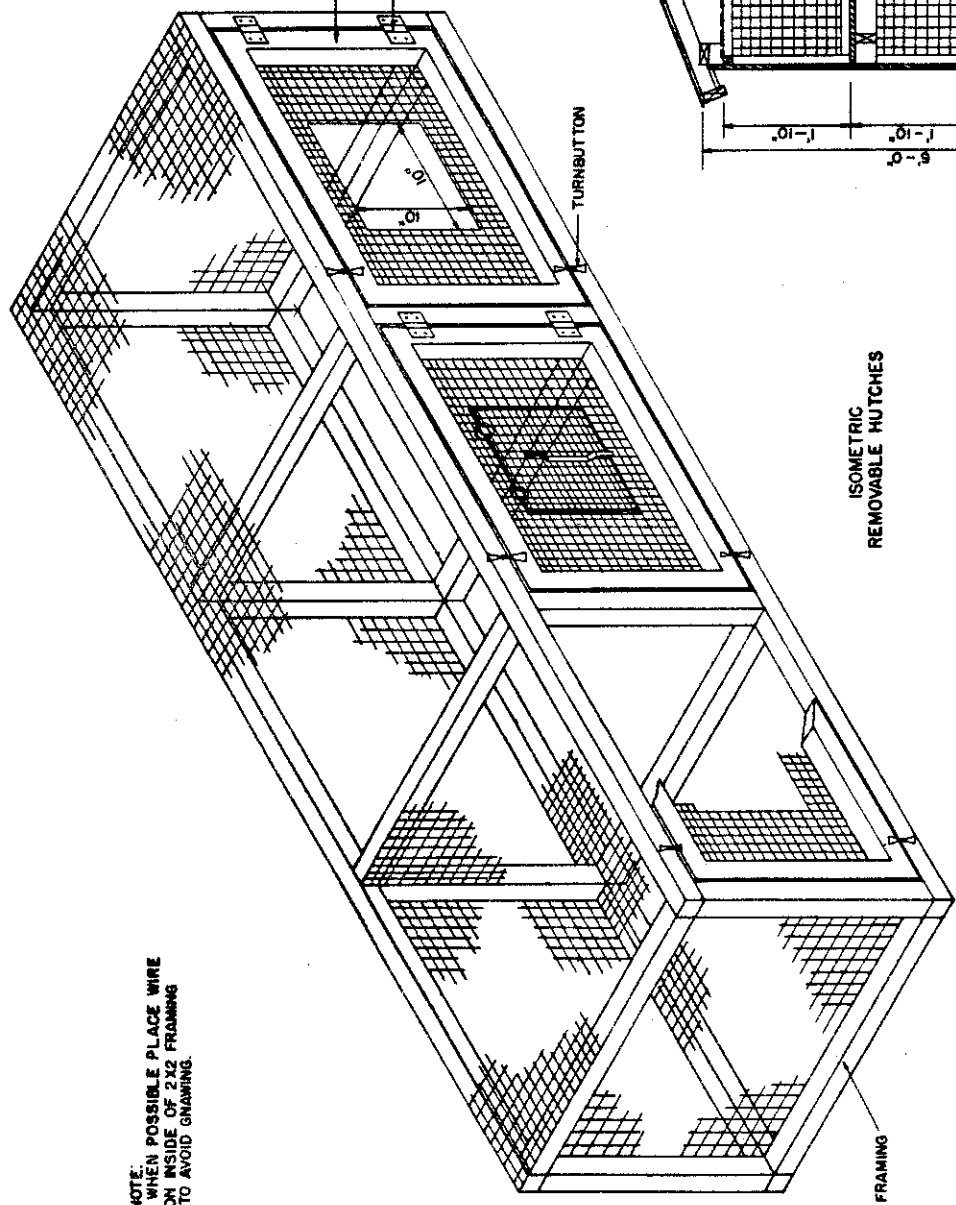
DOOR OPENING MAKE 1"  
 FOLD TOP & BOTTOM  
 LOOSE PIN HINGES FOR  
 OPENING FRONT AS A DOOR  
 OR TO REMOVE FRONT.

LOUVERED VENTILATOR

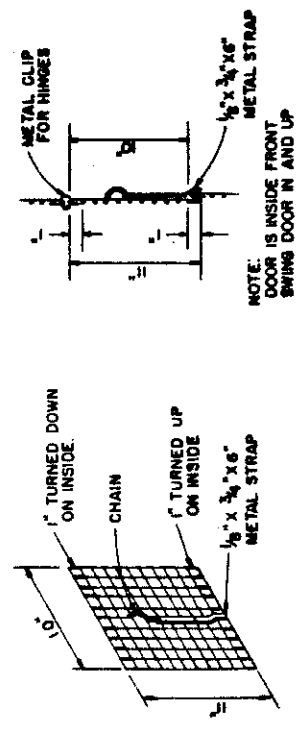
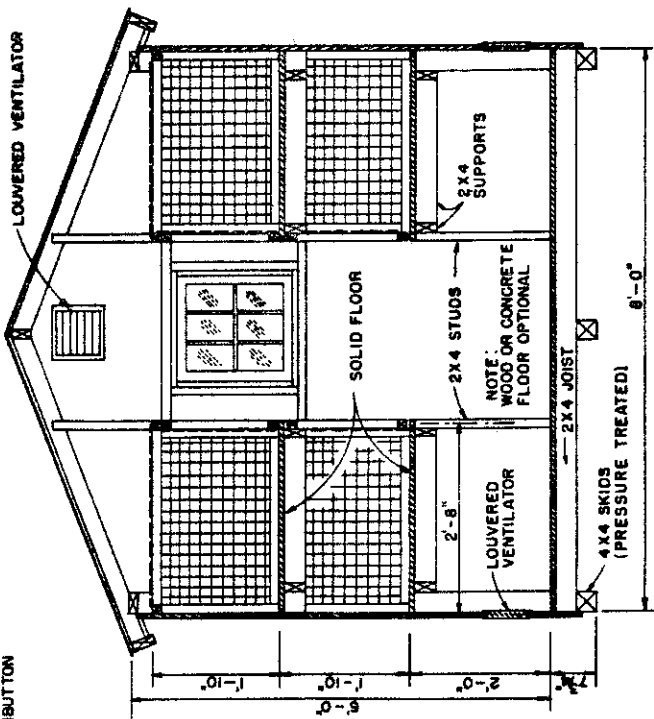
TURNBUTTON

ISOMETRIC  
 REMOVABLE HUTCHES

2X2 FRAMING



NOTE:  
 WHEN POSSIBLE PLACE WIRE  
 ON INSIDE OF 2X2 FRAMING  
 TO AVOID GRABBING.



NOTE:  
 DOOR IS INSIDE FRONT  
 SWING DOOR IN AND UP

DOOR DETAILS

SECTION  
 DOUBLE DECK SOLID  
 FLOOR HUTCH



COOPERATIVE EXTENSION WORK IN  
 AGRICULTURE AND HOME ECONOMICS  
 THE PENNSYLVANIA STATE UNIVERSITY  
 AND  
 UNITED STATES DEPARTMENT OF AGRICULTURE COOPERATING

**RABBIT HOUSE**

WISC. '75 6233 SHEET 2 OF 2  
 ORDER NO. 729-6233